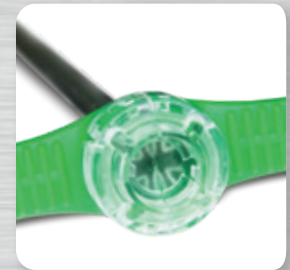


Valved Tearaway Introducers



Hemostasis Valve



Smooth Transition

Reliable. Consistent. Low Insertion Force.

The Valved Tearaway Introducer Sets feature an integrated, low insertion force hemostasis valve, balancing decreased risk of blood loss and air embolism with ease of catheter insertion.

Features:

- Ergonomic design with smooth transition
- Easy, secure dilator locking mechanism
- Consistent peel
- Available in 5Fr to 16Fr



For more information about Valved Tearaway Introducers, call (800) 639-2800 or visit galtmedical.com.

Valved Tearaway Introducers



Valved Tearaway Introducer Sets

| Non-sterile Model Number | Size (Fr) | Sheath Length (cm) | Dilator Length (cm) | Accepts Guidewire Diameter |
|--------------------------|-----------|--------------------|---------------------|----------------------------|
| INT-042-05 | 5 | 13 | 17 | .038" |
| INT-042-06 | 6 | 13 | 17 | .038" |
| INT-042-07 | 7 | 13 | 17 | .038" |
| INT-042-08 | 8 | 13 | 17 | .038" |
| INT-042-09 | 9 | 13 | 17 | .038" |
| INT-042-10 | 10 | 13 | 17 | .038" |
| INT-042-11 | 11 | 13 | 17 | .038" |
| INT-042-12 | 12 | 13 | 17 | .038" |
| INT-042-13 | 13 | 13 | 17 | .038" |
| INT-042-14 | 14 | 13 | 17 | .038" |
| INT-042-15 | 15 | 13 | 17 | .038" |
| INT-042-16 | 16 | 13 | 17 | .038" |

